



ant

Aa Aa

Aa Aa

Aa Aa

Aa Aa

Aa Aa



Beaver

B B B

B B B

B B B

B B B

B B B



cat

Cc

Cc

Cc

Cc

Cc

Cc

Cc

Cc

Cc

Cc



Dog

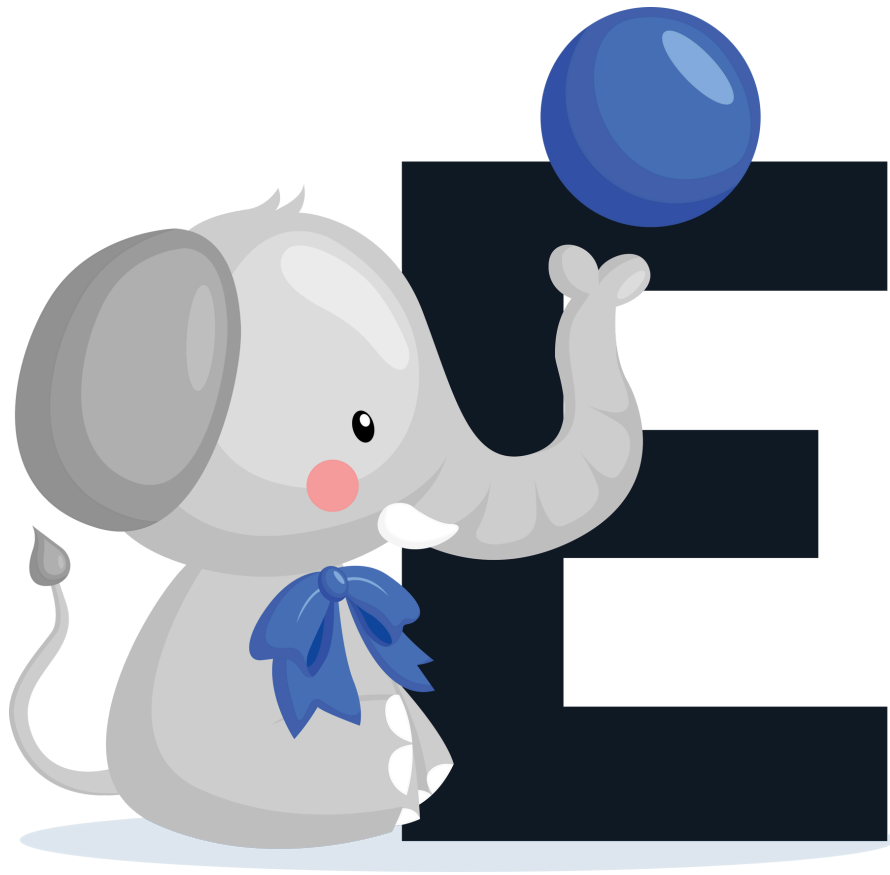
D D D

D D D

D D D

D D D

D D D



elephant

Ee Ee

Ee Ee

Ee Ee

Ee Ee

Ee Ee



flamingo

Ff Ff

Ff Ff

Ff Ff

Ff Ff

Ff Ff



goat

Gg Gg

Gg Gg

Gg Gg

Gg Gg

Gg Gg



Horse

H H H

H H H

H H H

H H H

H H H



iguana

Handwriting practice lines for the letter 'i'. The first row shows two examples of the letter 'i' in green, one solid and one dashed, on a set of three horizontal lines (top, middle dashed, bottom). The following four rows show two dashed 'i' characters on the same set of lines for tracing. The final row shows two solid 'i' characters on the same set of lines for independent practice.



jellyfish

J j J j

J j J j

J j J j

J j J j

J j J j



koala

K K K

K K K

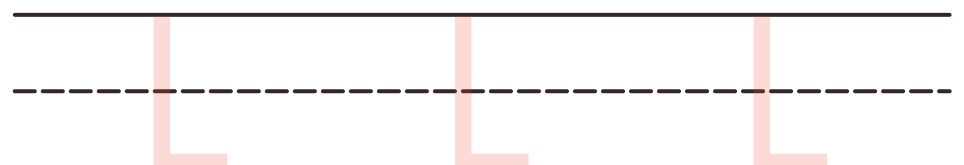
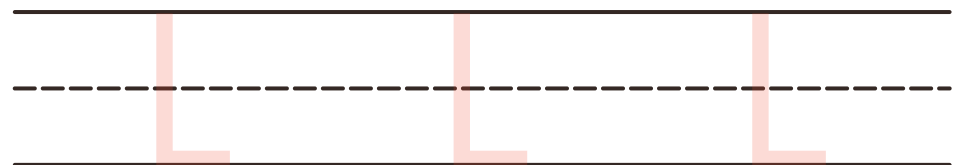
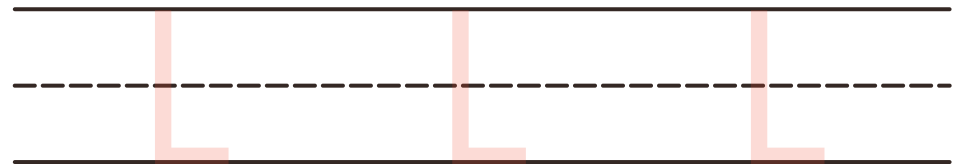
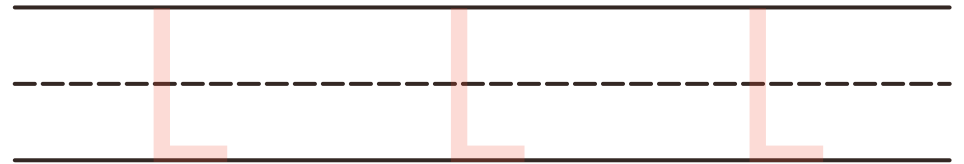
K K K

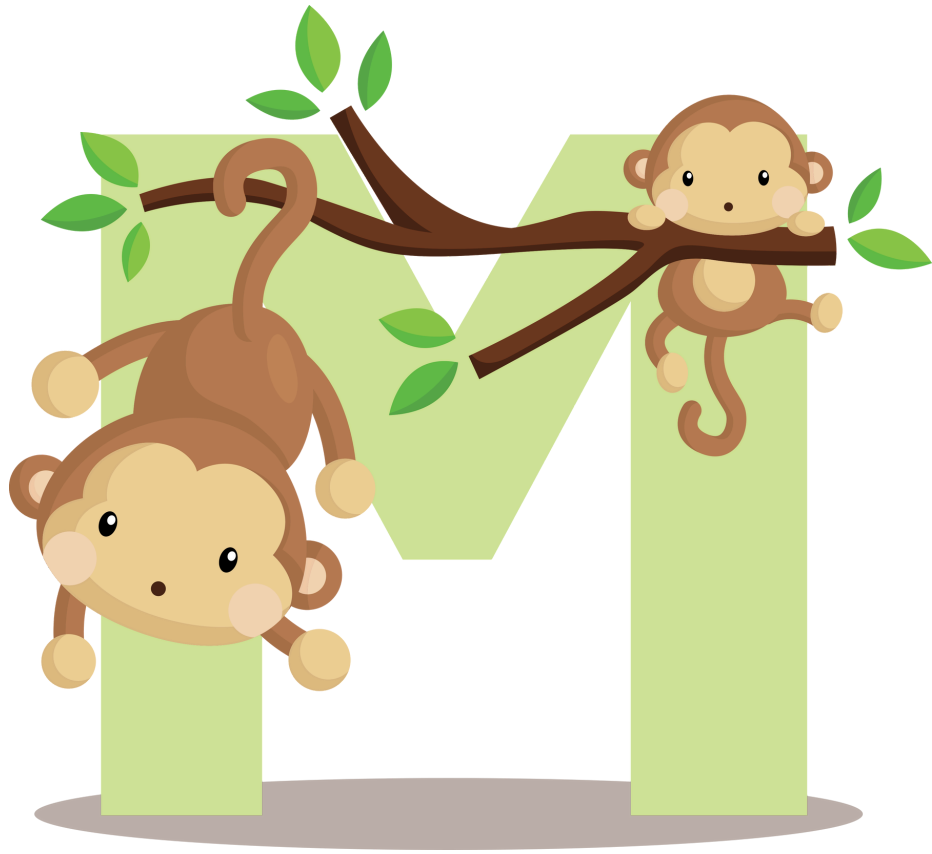
K K K

K K K



lion





monkey

Mm Mm

Mm Mm

Mm Mm

Mm Mm

Mm Mm



narwhal

Nn Nn

Nn Nn

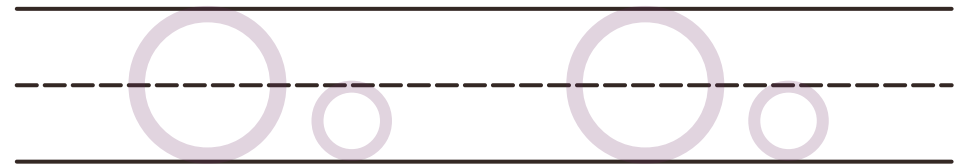
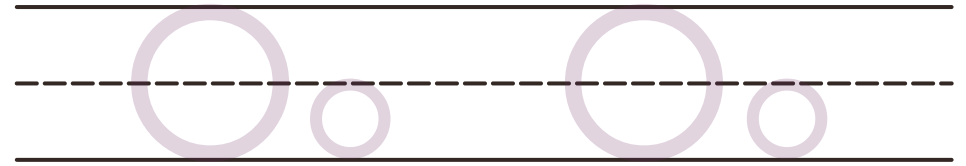
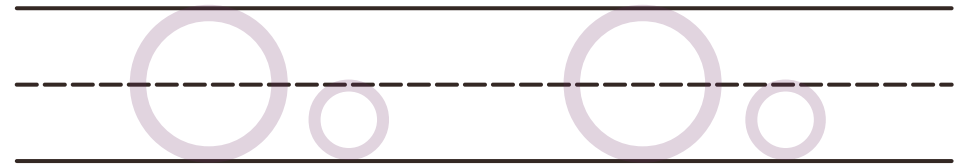
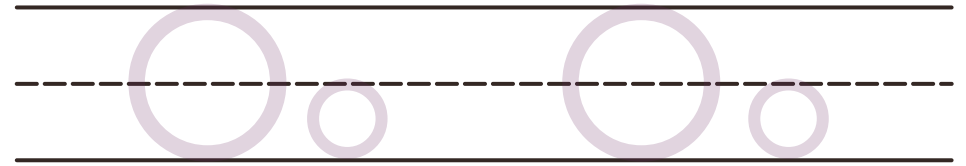
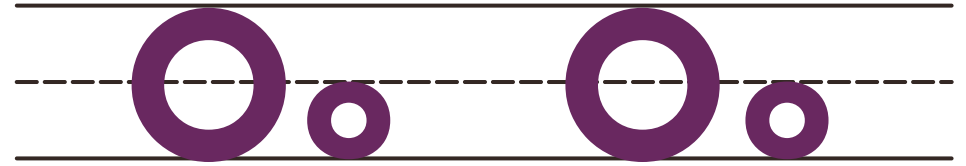
Nn Nn

Nn Nn

Nn Nn



owl





penguin

P p P p

P p P p

P p P p

P p P p

P p P p



quail

Qq Qq

Qq Qq

Qq Qq

Qq Qq

Qq Qq



rooster

Rr Rr

Rr Rr

Rr Rr

Rr Rr

Rr Rr



shark

S s S s

S s S s

S s S s

S s S s

S s S s



turtle

T T T

T T T

T T T

T T T

T T T



unicorn

U u U u

U u U u

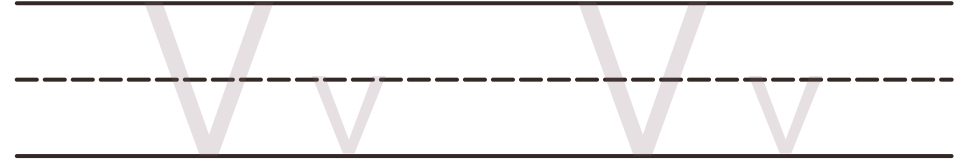
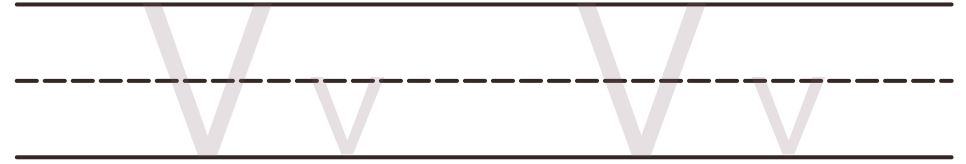
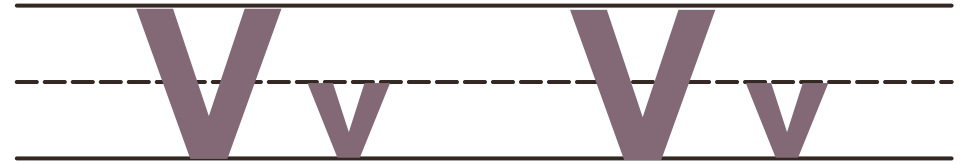
U u U u

U u U u

U u U u



vampire
bat





whale

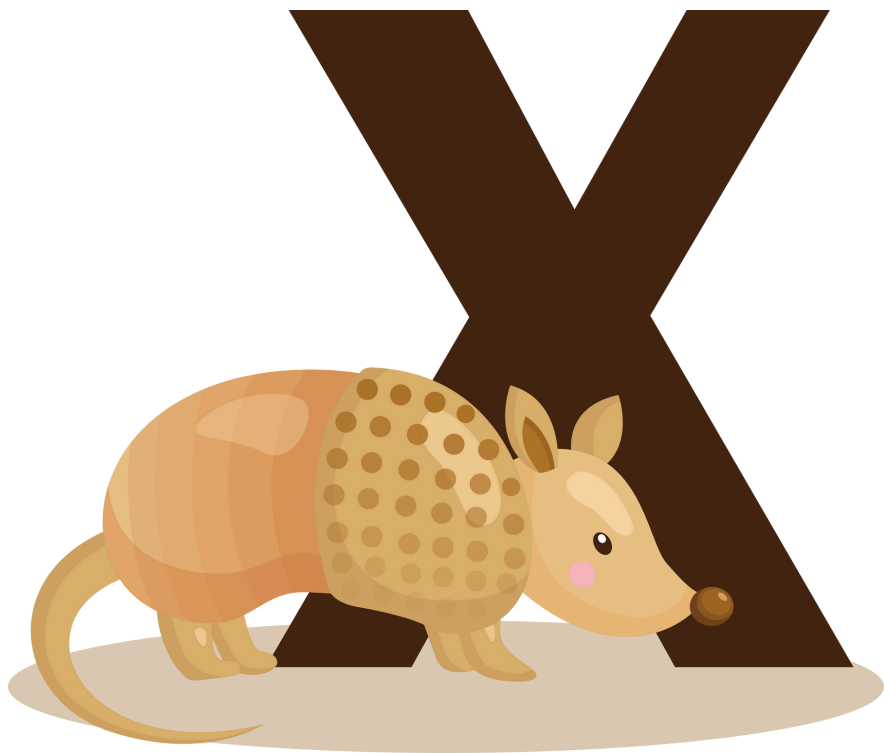
W w W w

W w W w

W w W w

W w W w

W w W w



xenopus

X x X x

X x X x

X x X x

X x X x

X x X x

X x X x

X x X x



yak

Y y Y y

Y y Y y

Y y Y y

Y y Y y

Y y Y y



zebra

Zz Zz

Zz Zz

Zz Zz

Zz Zz

Zz Zz

